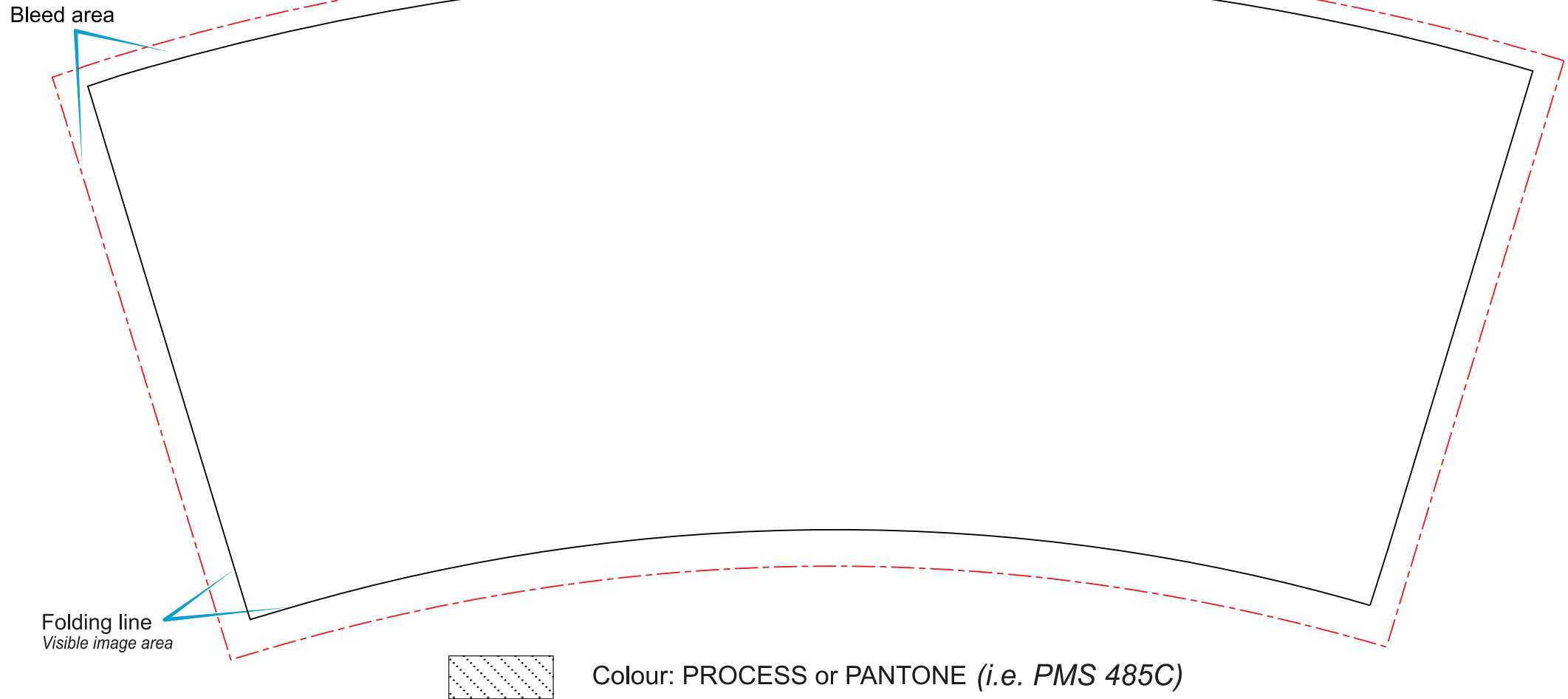


12oz Long Double wall (Outer wall)



Please use **Pantone Solid Colour System** for coated/uncoated paper -  
**PANTONE MATCHING SYSTEM® (PMS)** for coated/uncoated paper

If anything **was printed** before with design/colours you want to use on the paper cups, **please mail us a sample**, that we can achieve consistency of colour reproduction. (i.e. business cards, brochures, advertising material etc )

**Please NOTE:**

Red dotted line indicates image area including bleed.

All text/images (except background) must be positioned

- no less than **7-8mm** from the folding line - **black colored line** (from the top, left & right side)

- and **14-16mm** (from the bottom)

*to avoid being hidden when cup is folded and to avoid problems*

*that can be caused by high temperature used to seal cups*

- PLEASE MAKE SURE THAT ALL TEXT IS **OUTLINED** or ALL USED FONTS SUPPLIED

- PLEASE NOTE THAT FONT SIZE SHOULD NOT BE LESS THAN 3-4pt IF YOU EXPECT TEXT TO BE LEGIBLE

- PLEASE SUPPLY ALL USED BITMAP (PHOTOGRAPHIC) IMAGES AS SEPARATE FILES ALONG WITH ARTWORK

- PLEASE NOTE THAT ALL USED BITMAP (PHOTOGRAPHIC) IMAGES SHOULD BE HIGH RESOLUTION (300dpi+)

- PLEASE SPECIFY **PANTONE COLOURS** or MAIL PREVIOUSLY PRINTED ITEMS WITH REQUIRED COLOURS FOR COLOUR MATCHING