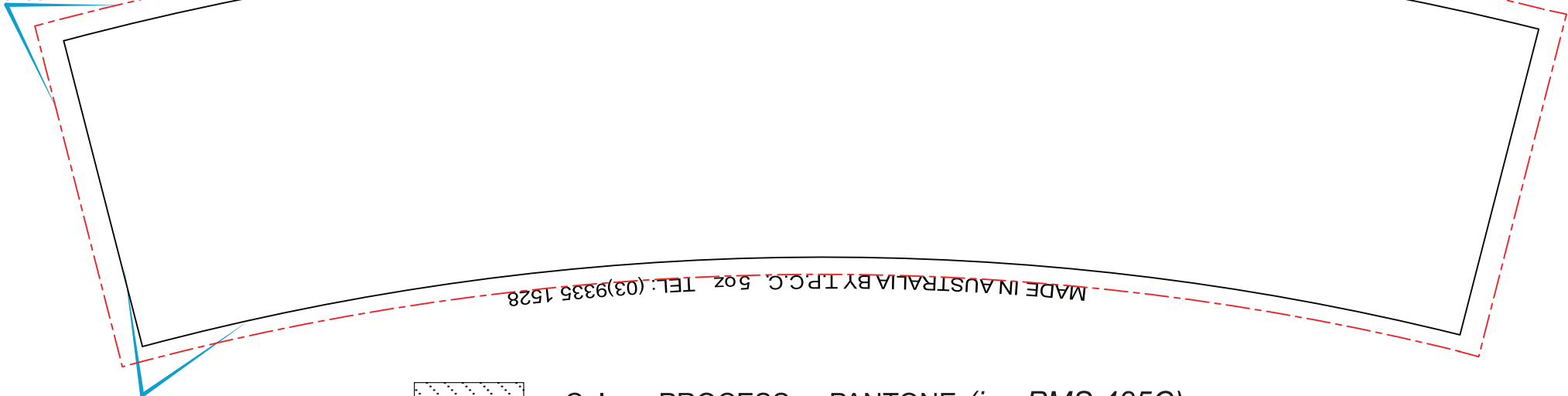
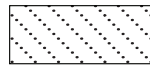


Bleed area



Folding line
Visible image area



Colour: PROCESS or PANTONE (i.e. PMS 485C)

Please use **Pantone Solid Colour System** for coated/uncoated paper -
PANTONE MATCHING SYSTEM® (PMS) for coated/uncoated paper

If anything **was printed** before with design/colours you want to use on the paper cups, **please mail us a sample**, that we can achieve consistency of colour reproduction. (i.e. business cards, brochures, advertising material etc)

Please NOTE:

Red dotted line indicates image area including bleed.

All text/images (except background) must be positioned

- no less than **6-8mm** from the folding line - **black colored line** (from the top, left & right side)

- and **12-16mm** (from the bottom)

to avoid being hidden when cup is folded and to avoid problems

that can be caused by high temperature used to seal cups

- PLEASE MAKE SURE THAT ALL TEXT IS **OUTLINED** or ALL USED FONTS SUPPLIED

- PLEASE NOTE THAT FONT SIZE SHOULD NOT BE LESS THAN 3-4pt IF YOU EXPECT TEXT TO BE LEGIBLE

- PLEASE SUPPLY ALL USED BITMAP (PHOTOGRAPHIC) IMAGES AS SEPARATE FILES ALONG WITH ARTWORK

- PLEASE NOTE THAT ALL USED BITMAP (PHOTOGRAPHIC) IMAGES SHOULD BE HIGH RESOLUTION (300dpi+)

- PLEASE SPECIFY **PANTONE COLOURS** or MAIL PREVIOUSLY PRINTED ITEMS WITH REQUIRED COLOURS FOR COLOUR MATCHING